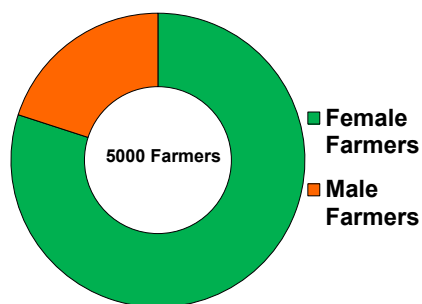
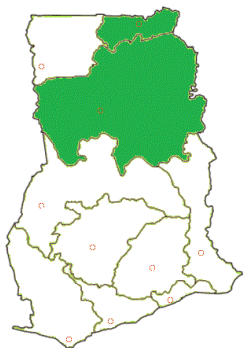


# Growing Rice Market Opportunities for Women

A Matching Grant Fund Project of the Competitive African Rice Initiative (CARI) & Christian Aid



## Goal

The Walmart foundation is supporting CARI to enhance the economic development of women through crop diversification, rice production and parboiling. The goal of this project is to integrate 5000 beneficiaries (80% women) into sustainable and competitive business models that lead to increased paddy production as well as to improvements in quality. This project contributes to the reduction of poverty and especially to the economic empowerment of women in the Northern region and upper East of Ghana.

## Our Approach

In order to double the yield and income of 3000 parboiling women and 2000 paddy producers, support is given through training in Good Agricultural Practices (GAP) and provision of improved technical packages. Christian Aid facilitates training of women processors in the production of quality parboiled rice in line with market preferences, including demonstration of improved technology and elaboration of business plans to facilitate purchase of improved technology by processors' groups.

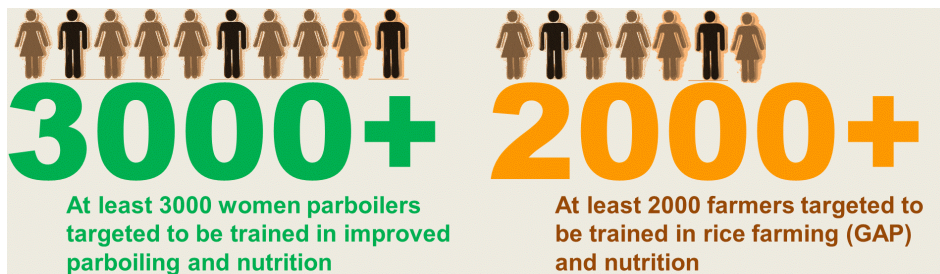
Training in crop diversification enables beneficiaries to have an additional income source next to paddy. By supporting contract farming arrangements between farmers and off takers, the project enables farmers to market their product.

The interventions planned by the project support farmers to access certified rice seeds and link processors to these farmers. Farmer Based-Organizations (FBOs), each including 15 members, are trained in financial literacy, group savings and provided with saving boxes.

## Service Providers

TradeAID is a non-profit organization located in Bolgatanga with a focus on reducing poverty through making trade work for the poor. Under this project they will be responsible for developing the training material for the Savings Internal Lending Community (SILC) trainings and they will also administer the trainings.

The Department of Cooperatives is mandated to register groups as cooperatives. Under this project, staff will partner with the department to train FBOs in group dynamics and structures.



## Contact

Christian Aid  
 Joyce Ashun  
 jashun@christian-aid.org  
 +233501288900